

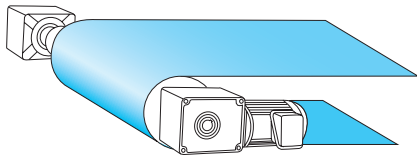


TL系列一軸上型蝸輪減速機

TL 4070 - 0400 - 30 S3 B

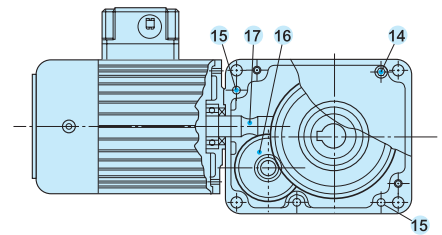
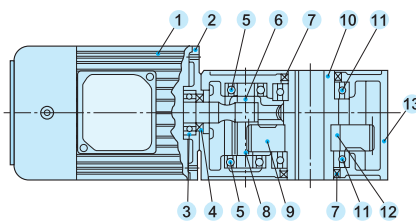
附剎車
 電壓: A: 110V C: 220V
 S₃: 三相220/380V S₄: 三相220/440V
 減速比: 30, 40, 50, 60, 75, 100, 120, 132,
 150, 180, 200, 250, 300
 馬力: 100W, 200W, 400W, 750W, 1500W
 框號代號: 4060, 4070, 5080
 軸上型代號

應用範例 Examples



輸送機 CONVEYER

零件組合圖 System Drawn

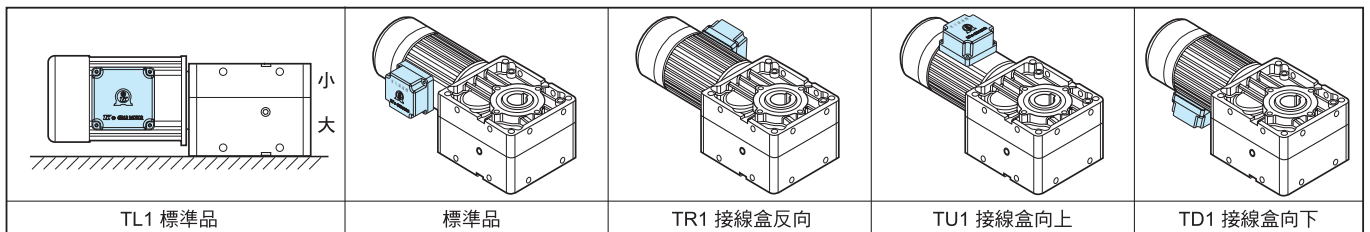


No.	零件名稱	Name of Parts
1	馬達	Motor
2	馬達盤	Motor Cover
3	滾珠軸承	Ball Bearing
4	油封	Oil Seal
5	滾珠軸承	Ball Bearing
6	雙圓鍵	Key

No.	零件名稱	Name of Parts
7	油封	Oil Seal
8	A齒輪軸	A Gear Shaft
9	B齒輪	B Gear
10	出力套軸	Output Shaft Bushing
11	滾珠軸承	Ball Bearing
12	雙圓鍵	Key

No.	零件名稱	Name of Parts
13	齒輪箱	Gear Shell
14	內六角螺絲	Hex. Screw
15	定位梢	Location Pin
16	蝸輪	Worm Wheel
17	蝸桿	Worm Shaft

安裝方式 Installation



轉矩表 Torque Table (Kg·m)

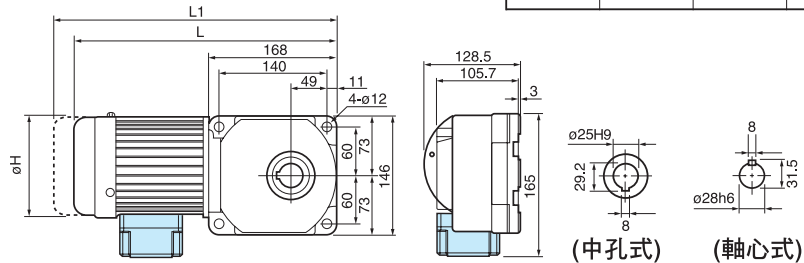
減速比	4060						4070						5080					
	0.1kW		0.2kW		0.4kW		0.1kW		0.2kW		0.4kW		0.4kW		0.75kW		1.5kW	
	50Hz	60Hz	50Hz	60Hz	50Hz	60Hz	50Hz	60Hz	50Hz	60Hz	50Hz	60Hz	50Hz	60Hz	50Hz	60Hz	50Hz	60Hz
30	1.76	1.44	3.51	2.87	6.88	5.74	1.76	1.44	3.51	2.87	6.88	5.74	6.88	5.74	12.87	10.64	25.49	21.53
40	2.34	1.91	4.69	3.83	9.17	7.66	2.34	1.91	4.69	3.83	9.17	7.66	9.17	7.66	17.16	14.19	33.99	28.71
45	2.64	2.15	5.27	4.31	10.32	8.61	2.64	2.15	5.27	4.31	10.32	8.61	10.32	8.61	19.31	15.96	38.24	32.30
50	2.93	2.39	5.86	4.79	11.47	9.57	2.93	2.39	5.86	4.79	11.47	9.57	11.47	9.57	21.45	17.74	42.49	35.89
60	3.41	2.78	7.03	5.74	13.76	11.48	3.41	2.78	6.82	5.57	13.34	11.14	13.34	11.14	24.96	20.64	49.44	41.76
75(80)	4.69	3.83	9.37	7.66	18.35	15.31	4.39	3.59	8.79	7.18	17.20	14.36	17.20	14.36	32.18	26.61	63.73	53.83
100	5.68	4.64	11.36	9.28	22.24	18.56	5.68	4.64	11.36	9.28	22.24	18.56	22.24	18.56	41.60	34.40	82.40	69.60
120	6.82	5.57	13.63	11.14	26.69	22.27	6.82	5.57	13.63	11.14	26.69	22.27	26.69	22.27	49.92	41.28	82.40	83.52
132	7.50	6.12	15.00	12.25	29.36	24.5	7.50	6.12	15.00	12.25	29.36	24.50	29.36	24.50	54.91	45.41	82.40	83.52
150	8.52	6.96	17.04	13.92	33.36	27.84	8.52	6.96	17.04	13.92	33.36	27.84	33.36	27.84	62.40	51.60	82.40	83.52
180	10.22	8.35	20.45	16.70	40.03	33.41	10.22	8.35	20.45	16.70	40.03	33.41	40.03	33.41	70.20	61.92	82.40	83.52
200	11.01	8.99	22.01	17.98	43.09	35.96	11.01	8.99	22.01	17.98	43.09	35.96	43.09	35.96	70.20	66.65	82.40	83.52
250	11.01	8.99	22.01	17.98	43.09	35.96	11.01	8.99	22.01	17.98	43.09	35.96	43.09	35.96	70.20	66.65	82.40	83.52
300	11.01	8.99	22.01	17.98	43.09	35.96	11.01	8.99	22.01	17.98	43.09	35.96	43.09	35.96	70.20	66.65	82.40	83.52

以上數值若有變動，恕不另行通知 We reserve the right to change without further notice.

TL Series Shaft-Mounted Reducer

Model: TL4060

減速比 (Ratio) :
1/30~1/300



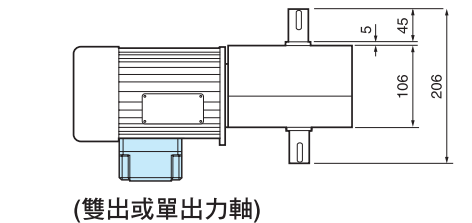
尺寸表 Dimension

單位 : mm

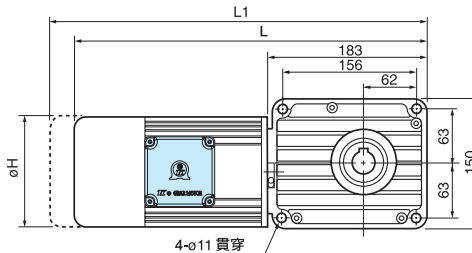
馬力 (4P)	L 標準	L1 含剎車	ϕH	重量 (Kg)
0.1kW	328	351	127	12.0
0.2kW	345	370	127	13.0
0.4kW	363	388	127	15.0

Model: TL4070

減速比 (Ratio) :
1/30~1/300



(雙出或單出力軸)

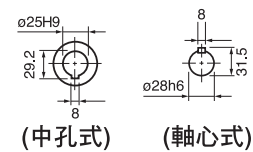


(中空型)

尺寸表 Dimension

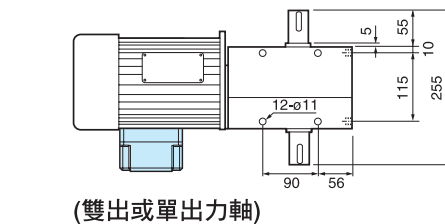
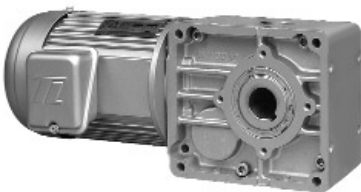
單位 : mm

馬力 (4P)	L 標準	L1 含剎車	ϕH	重量 (Kg)
0.1kW	345	370	127	12.5
0.2kW	363	380	127	13.5
0.4kW	382	407	127	15.5

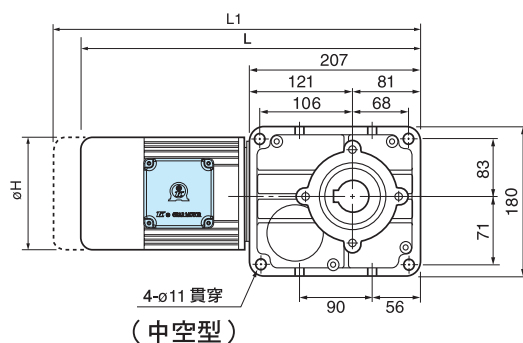


Model: TL5080

減速比 (Ratio) :
1/30~1/300



(雙出或單出力軸)

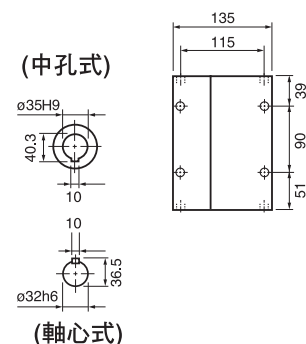


(中空型)

尺寸表 Dimension

單位 : mm

馬力 (4P)	L 標準	L1 含剎車	ϕH	重量 (Kg)
0.4kW	406	431	127	20
0.75kW	433	483	160	25.2
01.6kW	465	500	192	30.5



* L1之長度為馬達附剎車之總長。(L1 is the total length of motor with brake.)

* 出線盒可指定向上, 向下, 左邊, 右邊。(Terminal Box position can be changed.)

* 以上數值若有變動, 恕不另行通知* We reserve the right to change without further notice.