

馬達減速機型號解說 (GL, GF, PL, PF 規格)



- PL-臥式馬達外殼鋁合金型
Horizontal Aluminum alloy motor shell
- PF-立式馬達外殼鋁合金型
Vertical Aluminum alloy motor shell
- GL-臥式馬達外殼鋼板型 (已停產)
Horizontal Steel motor shell
- GF-立式馬達外殼鋼板型 (已停產)
Vertical Steel motor shell
- PLD-臥式雙軸型
Horizontal dual-shaft type
- PFD-立式雙軸型
Vertical dual-shaft type
- PLK-臥式入力自配型
Horizontal self-contained motor type
- PFK-立式入力自配型
Vertical self-contained motor type

PL 22 - 0200 - 30 S - □

出力軸
Output Shaft :
ø18, ø22, ø28, ø32,
ø40, ø50

馬力 HP:
100W, 200W, 400W, 750W,
1500W, 2200W, 3700W

減速比 Ratio: 1/30

B-附電磁剎車
W/Electromagnetic
Brake

A: 單相 Single Phase 110V
C: 單相 Single Phase 220V
S₂: 三相 3-Phase 220V
S₃: 三相 3-Phase 220/380V
S₄: 三相 3-Phase 220/440V

馬達及安全剎車器特性表 Specifications of PL, PF Type Motor & Brake

| 相 (Phase) | 馬力 (KW) | 極數 (P) | 電壓 (V) | 頻率 (Hz) | 定格 RATING | | | 絕緣 Class | 扭矩 (Kg·m) | 釋放時間 Release Time | | | 調整間隙 Adjust Gap | | 附安全剎車器 With Brake | | |
|-----------|---------|--------|-----------|---------|------------|----------|-------------|----------|-----------|-------------------|----------------|---------------------|--------------------|-----------------|----------------------------|-----------------------|--|
| | | | | | 轉速 (R.P.M) | 電流 (A) | 轉矩 (Kg·m) | | | 交流一切斷 AC Switch | 直流別切 DC Switch | 規定值 Specified Value | 限界值 Boundary Value | 剎車電壓 Brake Volt | 整流電壓 Input Volt | 使用次數 Operation Times | |
| 三相 3ø | 0.1 | 4P | 220/380 | 60/50 | 1680/1380 | 0.8/0.46 | 0.058/0.071 | E/F | 0.1 | 0.1 | 0.06 | 0.3 | 0.7 | DC90V | AC200~240V | 6次/分 (6 times/min) | |
| | 0.2 | | 220/380 | 60/50 | 1680/1380 | 1.2/0.7 | 0.116/0.142 | E/F | 0.2 | 0.07 | 0.03 | 0.3 | 0.7 | | | | |
| | 0.4 | | 220/380 | 60/50 | 1680/1400 | 2.1/1.2 | 0.232/0.278 | E/F | 0.4 | 0.10 | 0.03 | 0.3 | 0.7 | | | | |
| | 0.75 | | 220/380 | 60/50 | 1680/1400 | 3.6/2.1 | 0.43/0.52 | E/F | 0.8 | 0.12 | 0.05 | 0.4 | 1.0 | | | | |
| | 1.5 | | 220/380 | 60/50 | 1680/1420 | 6.1/3.5 | 0.87/1.03 | E/F | 1.6 | 0.14 | 0.05 | 0.4 | 1.0 | | | | |
| | 2.2 | | 220/380 | 60/50 | 1680/1420 | 9.5/5.5 | 1.27/1.51 | E/F | 2.5 | 0.15 | 0.03 | 0.4 | 1.0 | | | | |
| 3.7 | 220/380 | 60/50 | 1680/1420 | 15/8.7 | 2.14/2.54 | E/F | 5.0 | 0.17 | 0.05 | 0.5 | 1.2 | | | | | | |
| 單相 1ø | 0.1 | 4P | 110/220 | 60/50 | 1680/1380 | 2/1 | 0.058/0.071 | E | 0.1 | 0.1 | 0.06 | 0.3 | 0.7 | DC90V | AC-100~110V AC-200~240V | 6次/分 6 times/min | |
| | 0.2 | | 110/220 | 60/50 | 1680/1380 | 4/2 | 0.116/0.142 | E | 0.2 | 0.07 | 0.03 | 0.3 | 0.7 | | | | |
| | 0.4 | | 110/220 | 60/50 | 1680/1400 | 8/4 | 0.232/0.278 | E | 0.4 | 0.10 | 0.03 | 0.3 | 0.7 | | | | |
| | 0.75 | | 110/220 | 60/50 | 1680/1400 | 12/6 | 0.43/0.52 | E | 0.8 | 0.12 | 0.15 | 0.4 | 1.0 | | | | |

減速機輸出特性表 Specifications of Gear Reducer

(Kg · m) x 9.8 = N · m

| 減速比 Gear Ratio | 出力轉速 Out. rpm | | 0.1KW | | | 0.2KW | | | 0.4KW | | | 0.75KW | | | 1.5KW | | | 2.2KW | | | | | | | | |
|-------------------|------------------|------|-----------|------|------|-----------|----|------|-----------|--------|----|-----------|------|--------|-----------|-------|-------|-----------|----|-------|-------|--------|----|-------|-------|------|
| | 50Hz | 60Hz | 出力軸容許扭力荷重 | | | 出力軸容許扭力荷重 | | | 出力軸容許扭力荷重 | | | 出力軸容許扭力荷重 | | | 出力軸容許扭力荷重 | | | 出力軸容許扭力荷重 | | | | | | | | |
| | Type | Type | 型號 | 50Hz | 60Hz | O.H.L. | 型號 | 50Hz | 60Hz | O.H.L. | 型號 | 50Hz | 60Hz | O.H.L. | 型號 | 50Hz | 60Hz | O.H.L. | 型號 | 50Hz | 60Hz | O.H.L. | | | | |
| 5 | 300 | 360 | | 0.31 | 0.26 | 60 | 18 | 0.62 | 0.51 | 60 | 22 | 1.2 | 1 | 90 | | 4.3 | 1.9 | 130 | | 4.8 | 3.5 | 180 | 32 | 6.6 | 5.5 | 220 |
| 10 | 150 | 180 | | 0.62 | 0.51 | 90 | | 1.2 | 1 | 90 | | 2.5 | 2.1 | 120 | | 2.6 | 3.9 | 180 | | 8.8 | 7.1 | 250 | | 13.2 | 10.7 | 320 |
| 12.5 | 120 | 144 | | 0.77 | 0.66 | 100 | | 1.54 | 1.24 | 100 | | 3.1 | 2.5 | 130 | | 5.7 | 4.9 | 190 | | 11 | 8.9 | 290 | | 16.5 | 13.3 | 340 |
| 15 | 100 | 120 | | 0.93 | 0.77 | 100 | | 1.85 | 1.5 | 100 | | 3.7 | 2.9 | 140 | | 6.9 | 5.8 | 220 | | 13.2 | 10.7 | 290 | | 19.8 | 16 | 360 |
| 20 | 75 | 90 | 18 | 1.2 | 1 | 120 | | 2.47 | 1.99 | 120 | | 4.94 | 4 | 150 | | 9.3 | 7.7 | 240 | | 17.6 | 14.2 | 330 | | 26.5 | 21.4 | 410 |
| 25 | 60 | 72 | | 1.5 | 1.3 | 130 | | 3 | 2.49 | 130 | | 6.17 | 4.9 | 170 | | 11.6 | 9.6 | 250 | | 22.1 | 17.8 | 390 | | 33.1 | 26.7 | 480 |
| 30 | 50 | 60 | | 1.9 | 1.5 | 140 | | 3.7 | 2.99 | 180 | | 7.41 | 5.9 | 260 | | 13.9 | 11.6 | 410 | | 26.5 | 21.4 | 520 | 40 | 39.7 | 32.1 | 710 |
| 40 | 37.5 | 45 | | 2.4 | 2 | 150 | 22 | 4.94 | 3.99 | 190 | 28 | 9.88 | 7.98 | 290 | | 17.9 | 14.9 | 430 | | 35.3 | 28.5 | 600 | | 53 | 42.8 | 740 |
| 50 | 30 | 36 | | 3 | 2.5 | 160 | | 6.17 | 4.98 | 200 | | 12.3 | 9.97 | 320 | | 22.4 | 18.7 | 470 | | 44.2 | 35.7 | 720 | | 66.3 | 53.3 | 880 |
| 60 | 25 | 30 | | 3.6 | 3 | 220 | | 7.4 | 5.98 | 220 | | 14.8 | 11.9 | 350 | 32 | 26.9 | 22.4 | 560 | 40 | 53 | 42.8 | 720 | | 79.5 | 64.2 | 1000 |
| 75 | 20 | 24 | | 4.6 | 3.7 | 220 | | 9.2 | 7.5 | 220 | | 18.5 | 14.9 | 350 | | 35.1 | 28.3 | 560 | | 66.3 | 53.5 | 720 | | 99.4 | 80.3 | 1000 |
| 90 | 16.6 | 20 | | 5.5 | 4.5 | 250 | | 11.1 | 9 | 250 | | 22.2 | 17.9 | 350 | | 42.1 | 34 | 600 | | 79.5 | 64.2 | 720 | 50 | 119.3 | 96.3 | 1000 |
| 100 | 15 | 18 | | 6 | 5 | 250 | | 12.3 | 9.9 | 250 | | 24.7 | 19.9 | 350 | | 46.8 | 37.8 | 600 | | 88.4 | 71.4 | 720 | | 132.6 | 107.1 | 1000 |
| 120 | 12.5 | 15 | | 7.2 | 6 | 250 | | 14.8 | 11.9 | 340 | | 29.6 | 23.9 | 600 | | 58.4 | 47.3 | 720 | | 106 | 85.6 | 1000 | | | | |
| 150 | 10 | 12 | | 9.2 | 7.5 | 250 | | 18.5 | 14.9 | 350 | | 37 | 29.9 | 600 | | 70.2 | 56.7 | 720 | | 132.6 | 107.1 | 1000 | | | | |
| 180 | 8.3 | 10 | | 11 | 9 | 250 | 28 | 22.2 | 17.9 | 350 | 32 | 44.4 | 35.9 | 600 | 40 | 84.2 | 68 | 720 | 50 | 132.6 | 107.1 | 1000 | | | | |
| 200 | 7.5 | 9 | | 11.9 | 10 | 250 | | 24.7 | 19.9 | 350 | | 49.4 | 39.9 | 600 | | 93.6 | 75.6 | 720 | | 132.6 | 107.1 | 1000 | | | | |
| 300 | 5 | 6 | | 17.5 | 14.9 | 350 | | 35.1 | 28.3 | 600 | | 70.2 | 56.7 | 720 | | 132.6 | 107.1 | 1000 | | | | | | | | |
| 1200 | 1.25 | 1.5 | 28 | 58.5 | 47.6 | 350 | 32 | 70.2 | 56.7 | 600 | 40 | 70.2 | 56.7 | 720 | 50 | 132.6 | 107.1 | 1000 | | | | | | | | |
| 1800 | 0.83 | 1 | | 58.5 | 47.6 | 350 | | 70.2 | 56.7 | 600 | | 70.2 | 56.7 | 720 | | 132.6 | 107.1 | 1000 | | | | | | | | |

以上數值若有變動，恕不另行通知 We reserve the right to change without further notice.

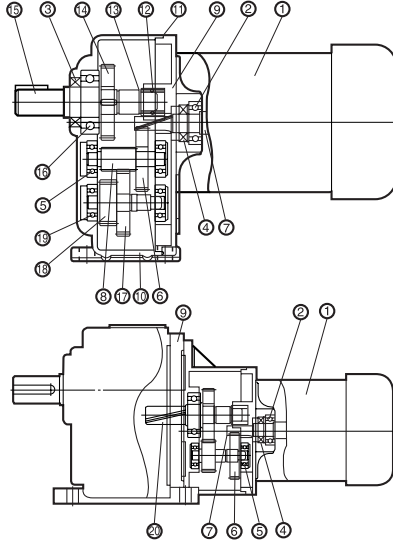
減速機外殼材質表 Shell Material

| 型號 Type | 材質 Material |
|---------|----------------------------|
| 18 | ADC 12 (鋁合金 Aluminum) |
| 22 | ADC 12 (鋁合金 Aluminum) |
| 28 | ADC 12 (鋁合金 Aluminum) |
| 32 | ADC 12 (鋁合金 Aluminum) |
| 40 | FC200 (20)- (鑄鐵 Cast Iron) |
| 50 | FC200 (20)- (鑄鐵 Cast Iron) |

油量表 Oil Capacities

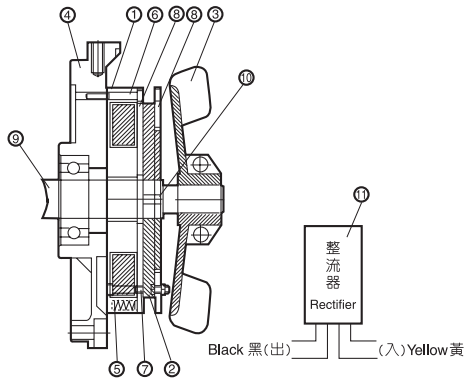
| 型號 Type | 注油量 g | 潤滑 Lubrication | 替代油品 |
|---------|-------|-----------------|----------------------------------|
| 18 | 180 | GR-250-OR 高溫齒輪油 | 美孚 Mobil SHC系列 Mobiltemp 0 |
| 22 | 250 | | |
| 28 | 500 | | |
| 32 | 650 | | |
| 40 | 900 | | |
| 50 | 1200 | | |

齒輪馬達減速機結構圖 Gear Reducer Structure



| 編號 No. | 零件名稱 Name of Parts |
|--------|--------------------------------|
| 1 | 馬達 Motor |
| 2 | 馬達軸承 Motor Bearing |
| 3 | 油軸封(出) Oil Seal (Out) |
| 4 | 油軸封(入) Oil Seal (In) |
| 5 | 二段側軸承 2nd Stage Bearing |
| 6 | 一段側齒輪 1st Stage Gear |
| 7 | 馬達小齒輪軸 Motor Pinion Shaft |
| 8 | 二段側小齒輪軸 2nd Stage Pinion Shaft |
| 9 | 本體蓋 Body Cover |
| 10 | 本體 Body |
| 11 | 油封膠圈 "O" Ring |
| 12 | 出力軸尖軸承 Needle Bearing (Sleeve) |
| 13 | 推力墊圈 Thrust Washer |
| 14 | 出力齒輪 Output Gear |
| 15 | 出力軸 Output Shaft |
| 16 | 出力軸軸承 Output Shaft Bearing |
| 17 | 二段側齒輪 2nd Stage Gear |
| 18 | 三段側小齒輪軸 3rd Stage Pinion |
| 19 | 三段側軸承 3rd Stage Bearing |
| 20 | 中間段齒輪 Middle Stage Gear |

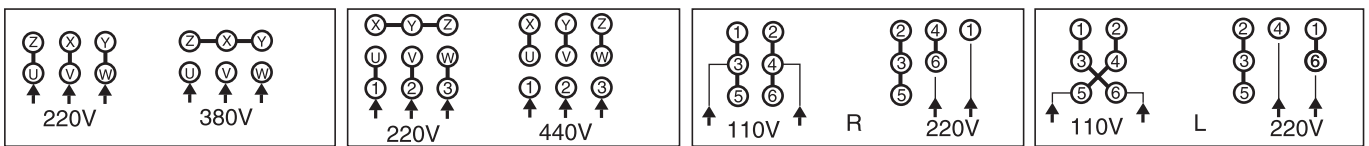
安全剎車器結構圖 Brake Structure



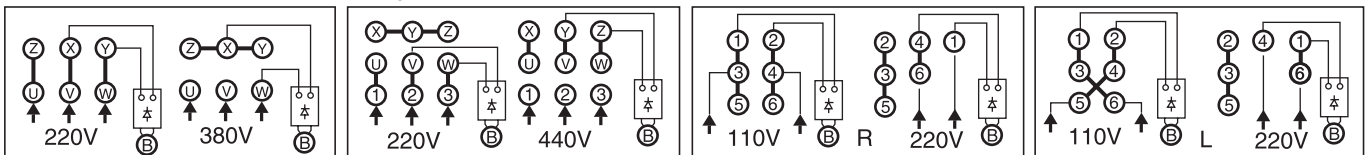
| 編號 No. | 零件名稱 Name of Parts |
|--------|---|
| 1 | 托架 Bracket(Brake Coil Included) |
| 2 | 剎車來令 Brake Shoe |
| 3 | 外扇風葉 Output Fan |
| 4 | 軸承蓋 Bearing Cover |
| 5 | 壓縮彈簧 Spring Compression |
| 6 | 內六角螺絲 Hex Screw |
| 7 | 內六角螺絲 Hex Screw |
| 8 | 剎車基板 Brake Plate |
| 9 | 馬達軸心 Motor Spindle |
| 10 | 來令片固定環 Brake Shoe Fixing Ring |
| 11 | 剎車電源裝置(整流器) Power Device for Brake(Rectifier) |

接線圖 Line Knotting Chart 三相(Three Phase)

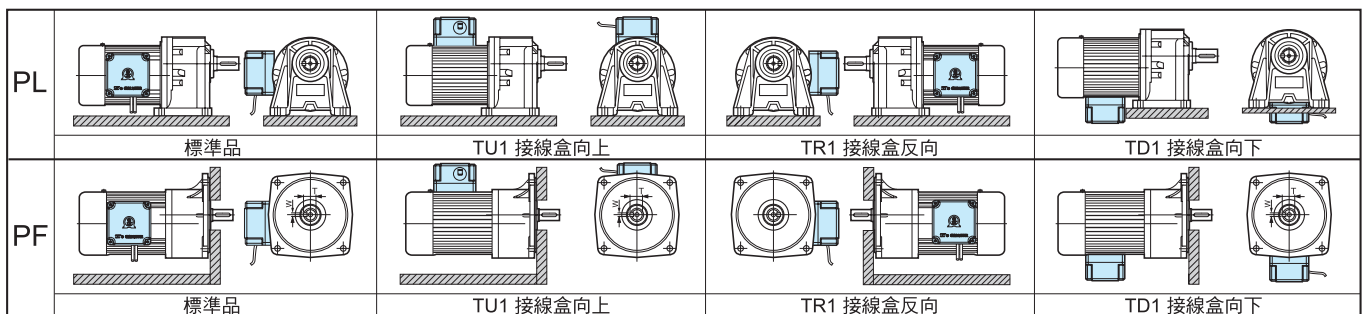
單相(Single Phase)

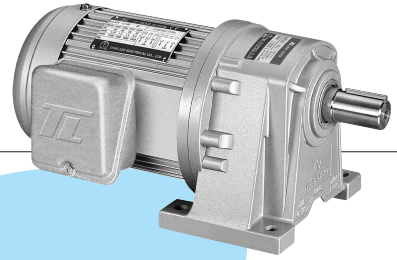


下方圖係附剎車之接線圖 Line knotting chart of the brake are shown as below..



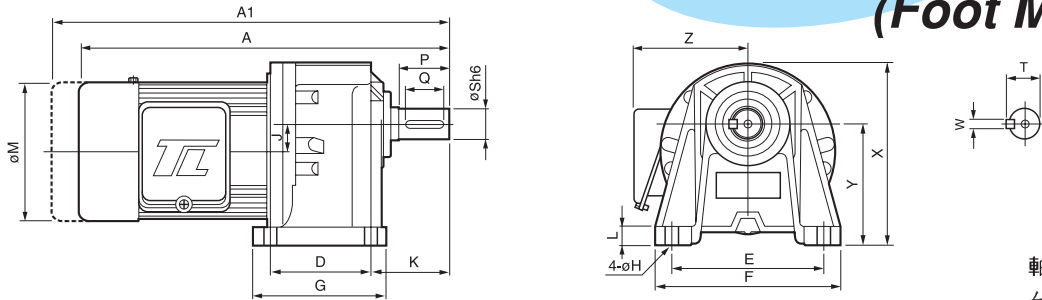
安裝方式 Installation





PL型(臥式)三相齒輪減速馬達

PL Type 3-Phase Horizontal Gear Reduction Motor (Foot Mounted)



軸徑40mm之鍵寬(W):
台灣尺寸: 10mm
大陸尺寸: 12mm

馬達尺寸表 Dimensions

| 馬力 HP | 減速比 Gear Ratio | 框號 Type | A | A1 | D | E | F | G | H | L | J | K | M | X | Y | Z | 出力軸端 Output Shaft | | | | | 重量 App.Wt. Kg |
|------------------------|-------------------|------------|-----|-----|-----|-----|-----|-----|----|-------|-------|-----|-----|-----|-----|-----|-------------------|----|------|-------------------------------|-------------------------------|---------------------|
| | | | | | | | | | | | | | | | | | P | Q | S | T | W | |
| 0.1KW 1/8HPx4P | 5~50 | 18 | 255 | 282 | 40 | 110 | 135 | 65 | 9 | 10 | 15.98 | 50 | 127 | 127 | 85 | 116 | 30 | 22 | 18 | 20 | 5 | 6.1 |
| | 60~200 | 22 | 287 | 314 | 65 | 130 | 155 | 90 | 11 | 12 | 17.66 | 60 | 127 | 145 | 90 | 116 | 40 | 30 | 22 | 25 | 7 | 7.0 |
| | 250~1800 | 22 | 356 | 383 | 65 | 130 | 155 | 90 | 11 | 12 | 17.66 | 60 | 127 | 145 | 90 | 116 | 40 | 30 | 22 | 25 | 7 | 8.9 |
| | 250~1800 | 28 | 393 | 420 | 90 | 140 | 170 | 120 | 11 | 15 | 23.11 | 70 | 127 | 170 | 110 | 100 | 45 | 35 | 28 | 31 | 7 | 11.6 |
| 0.2KW 1/4HPx4P | 5~10 | 18 | 273 | 301 | 40 | 110 | 135 | 65 | 9 | 10 | 15.98 | 50 | 127 | 127 | 85 | 116 | 30 | 22 | 18 | 20 | 5 | 7.04 |
| | 12.5~25 | 18 | 273 | 301 | 40 | 110 | 135 | 65 | 9 | 10 | 15.98 | 50 | 127 | 127 | 85 | 116 | 30 | 22 | 18 | 20 | 5 | 7.1 |
| | 12.5~100 | 22 | 305 | 330 | 65 | 130 | 155 | 90 | 11 | 12 | 17.66 | 60 | 127 | 145 | 90 | 116 | 40 | 30 | 22 | 25 | 7 | 8.8 |
| | 120~200 | 28 | 334 | 361 | 90 | 140 | 170 | 120 | 11 | 15 | 23.11 | 70 | 127 | 170 | 110 | 100 | 45 | 35 | 28 | 31 | 7 | 12 |
| | 250~1800 | 28 | 411 | 437 | 90 | 140 | 170 | 120 | 11 | 15 | 23.11 | 70 | 127 | 170 | 110 | 100 | 45 | 35 | 28 | 31 | 7 | 12.4 |
| 250~1800 | 32 | 443 | 471 | 130 | 170 | 210 | 167 | 13 | 18 | 30.22 | 75 | 127 | 204 | 130 | 116 | 55 | 45 | 32 | 36.5 | 10 | 24.6 | |
| 0.4KW 1/2HPx4P | 5~10 | 22 | 323 | 350 | 65 | 130 | 155 | 90 | 11 | 12 | 17.66 | 60 | 127 | 145 | 90 | 116 | 40 | 30 | 22 | 25 | 7 | 9.3 |
| | 12.5~25 | 22 | 323 | 350 | 65 | 130 | 155 | 90 | 11 | 12 | 17.66 | 60 | 127 | 145 | 90 | 116 | 40 | 30 | 22 | 25 | 7 | 10.6 |
| | 12.5~100 | 28 | 352 | 379 | 90 | 140 | 170 | 120 | 11 | 15 | 23.11 | 70 | 127 | 170 | 110 | 100 | 45 | 35 | 28 | 31 | 7 | 12.1 |
| | 120~200 | 32 | 382 | 409 | 130 | 170 | 210 | 167 | 13 | 18 | 30.22 | 75 | 127 | 204 | 130 | 116 | 55 | 45 | 32 | 36.5 | 10 | 25.2 |
| | 250~1800 | 32 | 464 | 491 | 130 | 170 | 210 | 167 | 13 | 18 | 30.22 | 75 | 127 | 204 | 130 | 116 | 55 | 45 | 32 | 36.5 | 10 | 27.6 |
| 250~1800 | 40 | 542 | 569 | 150 | 210 | 260 | 200 | 18 | 23 | 37.96 | 96 | 127 | 252 | 160 | 116 | 65 | 55 | 40 | 44 | ¹⁰ ₍₁₂₎ | 45.2 | |
| 0.75KW 1HPx4P | 5~25 | 28 | 379 | 405 | 90 | 140 | 170 | 120 | 11 | 15 | 23.11 | 70 | 160 | 170 | 110 | 131 | 45 | 35 | 28 | 31 | 7 | 15.1 |
| | 30~100 | 32 | 409 | 470 | 130 | 170 | 210 | 167 | 13 | 18 | 30.22 | 75 | 160 | 204 | 130 | 131 | 55 | 45 | 32 | 36.5 | 10 | 22 |
| | 120~200 | 40 | 465 | 491 | 150 | 210 | 260 | 200 | 18 | 23 | 37.96 | 96 | 160 | 252 | 160 | 131 | 65 | 55 | 40 | 44 | ¹⁰ ₍₁₂₎ | 45.2 |
| | 250~1800 | 40 | 569 | 595 | 150 | 210 | 260 | 200 | 18 | 23 | 37.96 | 96 | 160 | 252 | 160 | 131 | 65 | 55 | 40 | 44 | ¹⁰ ₍₁₂₎ | 47.7 |
| 250~1800 | 50 | 580 | 606 | 160 | 230 | 285 | 210 | 18 | 25 | 39.2 | 104 | 160 | 293 | 176 | - | 75 | 65 | 50 | 53.5 | 14 | 60.5 | |
| 1.5KW 2HPx4P | 5~30 | 32 | 442 | 477 | 130 | 170 | 210 | 167 | 13 | 18 | 30.22 | 75 | 192 | 204 | 130 | 138 | 55 | 45 | 32 | 36.5 | 10 | 25 |
| | 40~100 | 40 | 498 | 533 | 150 | 210 | 260 | 200 | 18 | 23 | 37.96 | 96 | 192 | 252 | 160 | 138 | 65 | 55 | 40 | 44 | ¹⁰ ₍₁₂₎ | 47.7 |
| | 120~200 | 50 | 509 | 543 | 160 | 230 | 285 | 210 | 18 | 25 | 39.2 | 104 | 192 | 293 | 176 | - | 75 | 65 | 50 | 53.5 | 14 | 55.0 |
| 2.2KW 3HPx4P | 5~10 | 32 | 467 | 502 | 130 | 170 | 210 | 167 | 13 | 18 | 30.22 | 75 | 192 | 204 | 130 | 138 | 55 | 45 | 32 | 36.5 | 10 | 35.2 |
| | 15~60 | 40 | 523 | 558 | 150 | 210 | 260 | 200 | 18 | 23 | 37.96 | 96 | 192 | 252 | 160 | 138 | 65 | 55 | 40 | 44 | ¹⁰ ₍₁₂₎ | 49.1 |
| 3.7KW 5HPx4P | 75~120 | 50 | 534 | 569 | 160 | 230 | 285 | 210 | 18 | 25 | 39.2 | 104 | 192 | 293 | 176 | - | 75 | 65 | 50 | 53.5 | 14 | 58.0 |
| | 5~20 | 40 | 552 | 586 | 150 | 210 | 260 | 200 | 18 | 23 | 37.96 | 96 | 233 | 252 | 160 | 190 | 65 | 55 | 40 | 44 | ¹⁰ ₍₁₂₎ | 67 |
| 25~100 | 50 | 562 | 597 | 160 | 230 | 285 | 210 | 18 | 25 | 39.2 | 104 | 233 | 293 | 176 | 190 | 75 | 65 | 50 | 53.5 | 14 | 72 | |

- A1之長度為馬達附剎車之總長。
- 淺藍色為輕扭力之機型。
- 1/8~1 HP之附剎車重量，約無剎車重量加2 KG。
- 2~3 HP之附剎車重量，約無剎車重量加3.5 KG。
- 40~50 筒齒箱上附加O型吊環(高度約50 mm)。
- 軸徑40mm之鍵寬(w)標準為10mm，12mm為選用規格。
- Length of A1 is the total length of motor and the brake.
- Colour in Light blue indicates motor of smaller torque.
- Weight of 1/8 ~ 1HP motor w / brake shall be weight of motor w / 0 brake + 2Kg.
- Weight of a 2~3HP motor w / brake is equal to motor w/0 brake + 3.5kg.
- "O" type rings shall be attached to the 40 ~ 50mm gear box. (add. Height: 50mm).
- Keyway (w) for type 40 is 10mm, 12mm is optional.

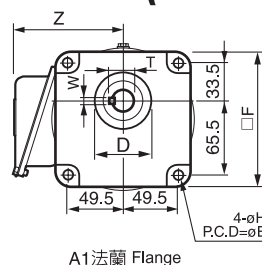
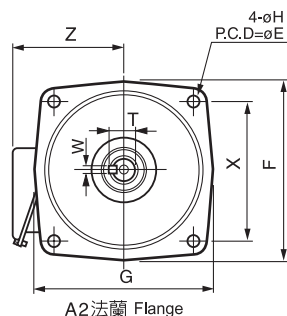
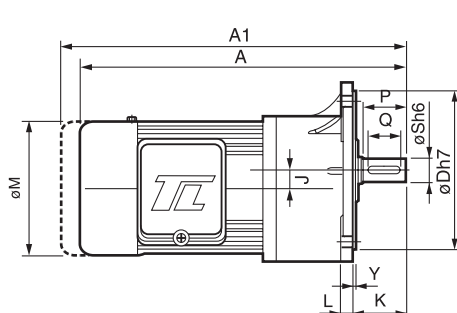
以上數值若有變動，恕不另行通知 We reserve the right to change without further notice.



PF型(立式)三相齒輪減速馬達

PF Type 3-Phase Vertical Gear Reduction Motor

(with Flange)



軸徑40mm 之鍵寬(W):

台灣尺寸: 10mm

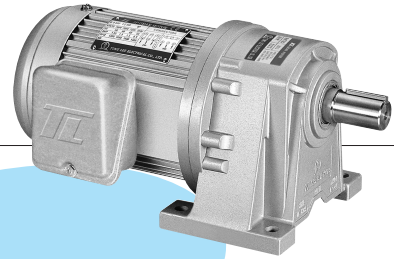
大陸尺寸: 12mm

馬達尺寸表 Dimensions

| 馬力 HP | 減速比 Gear Ratio | 框號 Type | A | A1 | D | E | X | F | G | H | L | J | K | M | Y | Z | 出力軸端 Output Shaft | | | | | 重量 App.Wt. Kg | 備註 Remark |
|------------------------|-------------------|------------|-----|-----|-----|-----|-----|-----|-----|---|------|-------|-----|-----|-----|-----|-------------------|----|------|------|------|---------------------|--------------|
| | | | | | | | | | | | | | | | | | P | Q | S | T | W | | |
| 0.1KW 1/8HPx4P | 5~50 | 18 | 255 | 282 | 50 | 140 | 99 | 122 | - | 9 | 12 | 15.98 | 40 | 125 | 5 | 116 | 30 | 22 | 18 | 20 | 5 | 6.08 | A1法蘭 |
| | 60~200 | 22 | 287 | 314 | 148 | 185 | 131 | 168 | 165 | 11 | 12 | 17.66 | 50 | 125 | 3.5 | 116 | 40 | 30 | 22 | 25 | 7 | 7.3 | A2法蘭 |
| | 250~1800 | 22 | 356 | 383 | 148 | 185 | 131 | 168 | 165 | 11 | 12 | 17.66 | 50 | 125 | 3.5 | 116 | 40 | 30 | 22 | 25 | 7 | 9.8 | A2法蘭 |
| | 250~1800 | 28 | 393 | 420 | 170 | 220 | 156 | 205 | 195 | $\begin{smallmatrix} \phi 11 \\ +14L \end{smallmatrix}$ | 13 | 23.11 | 60 | 125 | 4 | 116 | 45 | 35 | 28 | 31 | 7 | 11.9 | A2法蘭 |
| 0.2KW 1/4HPx4P | 5~10 | 18 | 273 | 302 | 50 | 140 | 99 | 122 | - | 9 | 12 | 15.98 | 40 | 125 | 5 | 116 | 30 | 22 | 18 | 20 | 5 | 7.1 | A1法蘭 |
| | 12.5~25 | 18 | 273 | 302 | 50 | 140 | 99 | 122 | - | 9 | 12 | 15.98 | 40 | 125 | 5 | 116 | 30 | 22 | 18 | 20 | 5 | 7.13 | A1法蘭 |
| | 12.5~100 | 22 | 305 | 330 | 148 | 185 | 131 | 168 | 165 | 11 | 12 | 17.66 | 50 | 125 | 3.5 | 116 | 40 | 30 | 22 | 25 | 7 | 8.81 | A2法蘭 |
| | 120~200 | 28 | 334 | 361 | 170 | 220 | 156 | 205 | 195 | $\begin{smallmatrix} \phi 11 \\ +14L \end{smallmatrix}$ | 13 | 23.11 | 60 | 125 | 4 | 116 | 45 | 35 | 28 | 31 | 7 | 11.7 | A2法蘭 |
| | 250~1800 | 28 | 411 | 437 | 170 | 220 | 156 | 205 | 195 | $\begin{smallmatrix} \phi 11 \\ +14L \end{smallmatrix}$ | 13 | 23.11 | 60 | 125 | 4 | 116 | 45 | 35 | 28 | 31 | 7 | 12.8 | A2法蘭 |
| 0.4KW 1/2HPx4P | 250~1800 | 32 | 443 | 471 | 185 | 255 | 180 | 241 | 225 | 15 | 15 | 30.22 | 70 | 125 | 4 | 116 | 55 | 40 | 32 | 36.5 | 10 | 25.2 | A2法蘭 |
| | 5~10 | 22 | 325 | 350 | 148 | 185 | 131 | 168 | 165 | 11 | 12 | 17.66 | 50 | 125 | 3.5 | 116 | 40 | 30 | 22 | 25 | 7 | 9.62 | A2法蘭 |
| | 12.5~25 | 22 | 325 | 350 | 148 | 185 | 131 | 168 | 165 | 11 | 12 | 17.66 | 50 | 125 | 3.5 | 116 | 40 | 30 | 22 | 25 | 7 | 11 | A2法蘭 |
| | 12.5~100 | 28 | 352 | 380 | 170 | 220 | 156 | 205 | 195 | $\begin{smallmatrix} \phi 11 \\ +14L \end{smallmatrix}$ | 13 | 23.11 | 60 | 125 | 4 | - | 45 | 35 | 28 | 31 | 7 | 13.4 | A2法蘭 |
| | 120~200 | 32 | 385 | 410 | 185 | 255 | 180 | 241 | 225 | 15 | 15 | 30.22 | 70 | 125 | 4 | 116 | 55 | 45 | 32 | 36.5 | 10 | 24.4 | A2法蘭 |
| 0.75KW 1HPx4P | 250~1800 | 32 | 465 | 592 | 185 | 255 | 180 | 241 | 225 | 15 | 15 | 30.22 | 70 | 125 | 4 | 116 | 55 | 45 | 32 | 36.5 | 10 | 26.8 | A2法蘭 |
| | 250~1800 | 40 | 545 | 570 | 230 | 310 | 219 | 297 | 268 | 15 | 20 | 37.96 | 76 | 125 | 5 | - | 65 | 55 | 40 | 44 | | 45.6 | A2法蘭 |
| | 5~25 | 28 | 380 | 405 | 170 | 220 | 156 | 205 | 195 | $\begin{smallmatrix} \phi 11 \\ +14L \end{smallmatrix}$ | 13 | 23.11 | 60 | 158 | 4 | 131 | 45 | 35 | 28 | 31 | 7 | 15.1 | A2法蘭 |
| | 30~100 | 32 | 410 | 435 | 185 | 255 | 180 | 241 | 225 | 15 | 15 | 30.22 | 70 | 158 | 4 | 131 | 55 | 45 | 32 | 36.5 | 10 | 26.9 | A2法蘭 |
| 1.5KW 2HPx4P | 120~200 | 40 | 465 | 492 | 230 | 310 | 219 | 297 | 268 | 15 | 20 | 37.96 | 76 | 158 | 5 | - | 65 | 55 | 40 | 44 | | 45.6 | A2法蘭 |
| | 250~1800 | 40 | 570 | 595 | 230 | 310 | 219 | 297 | 268 | 15 | 20 | 37.96 | 76 | 158 | 5 | - | 65 | 55 | 40 | 44 | | 48.1 | A2法蘭 |
| | 250~1800 | 50 | 580 | 606 | 250 | 352 | 249 | 320 | 290 | 18 | 22 | 39.2 | 86 | 158 | 5 | - | 75 | 65 | 50 | 53.5 | 14 | 57.3 | A2法蘭 |
| 2.2KW 3HPx4P | 5~30 | 32 | 442 | 478 | 185 | 255 | 180 | 241 | 225 | 15 | 15 | 30.22 | 70 | 190 | 4 | 138 | 55 | 45 | 32 | 36.5 | 10 | 26.5 | A2法蘭 |
| | 40~100 | 40 | 500 | 535 | 230 | 310 | 219 | 297 | 268 | 15 | 20 | 37.96 | 76 | 190 | 5 | 138 | 65 | 55 | 40 | 44 | | 49.3 | A2法蘭 |
| | 120~200 | 50 | 510 | 543 | 250 | 352 | 249 | 320 | 290 | 18 | 22 | 39.2 | 86 | 190 | 5 | - | 75 | 65 | 50 | 53.5 | 14 | 60.2 | A2法蘭 |
| 3.7KW 5HPx4P | 5~10 | 32 | 467 | 502 | 185 | 255 | 180 | 241 | 225 | 15 | 15 | 30.22 | 70 | 190 | 4 | 138 | 55 | 45 | 32 | 36.5 | 10 | 34.2 | A2法蘭 |
| | 15~60 | 40 | 525 | 560 | 230 | 310 | 219 | 297 | 268 | 15 | 20 | 37.96 | 76 | 190 | 5 | 138 | 65 | 55 | 40 | 44 | | 50.8 | A2法蘭 |
| 3.7KW 5HPx4P | 75~120 | 50 | 535 | 570 | 250 | 352 | 249 | 320 | 290 | 18 | 22 | 39.2 | 86 | 190 | 5 | - | 75 | 65 | 50 | 53.5 | 14 | 55.6 | A2法蘭 |
| | 5~20 | 40 | 552 | 586 | 230 | 310 | 219 | 297 | 268 | 15 | 20 | 37.96 | 82 | 230 | 5 | 190 | 65 | 55 | 40 | 44 | | 56.5 | A2法蘭 |
| 25~100 | 50 | 565 | 600 | 250 | 352 | 249 | 320 | 290 | 18 | 22 | 39.2 | 86 | 230 | 5 | 190 | 75 | 65 | 50 | 53.5 | 14 | 60.0 | A2法蘭 | |

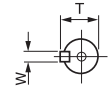
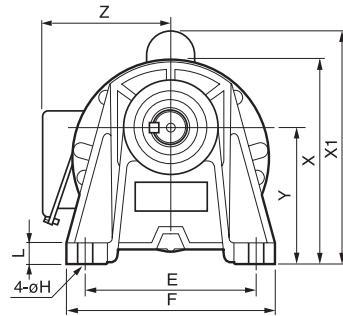
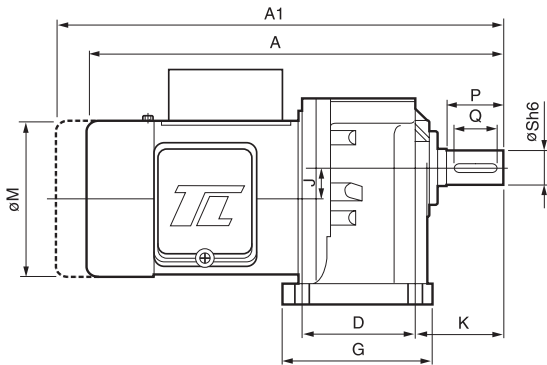
- A1之長度為馬達附剎車之總長。
- 淺藍色為輕扭力之機型
- 1/8~1 HP 之附剎車重量, 約無剎車重量加2KG.
- 2~3 HP 之附剎車重量, 約無剎車重量加 3.5 KG.
- 軸徑40mm之鍵寬(w)標準為10mm, 12mm為選用規格.
- Length of A1 is the total length of motor and the brake.
- Colour in Light blue indicates motor of smaller torque.
- Weight of 1/8 ~ 1HP motor w / brake shall be weight of motor w / 0 brake + 2Kg.
- Weight of a 2~3HP motor w / brake is equal to motor w/0 brake + 3.5kg.
- Keyway (w) for type 40 is 10mm, 12mm is optional.

以上數值若有變動, 恕不另行通知 We reserve the right to change without further notice.



PL 型(臥式)單相齒輪減速馬達

PL Type Single-Phase Horizontal Gear Reduction Motor (Foot Mounted)



軸徑40mm 之鍵寬(W): 台灣尺寸: 10mm
大陸尺寸: 12mm

馬達尺寸表 Dimensions

| 馬力 HP | 減速比 Gear Ratio | 框號 Type | A | A1 | D | E | F | G | H | L | J | K | M | X1 | X | Y | Z | 出力軸端 Output Shaft | | | | | 重量 App.Wt. Kg |
|------------------------|-------------------|------------|-----|-----|-----|-----|-----|-----|----|----|-------|----|-----|-----|-----|-----|-----|-------------------|----|----|------|------------|---------------------|
| | | | | | | | | | | | | | | | | | | P | Q | S | T | W | |
| 0.1KW 1/8HPx4P | 5~50 | 18 | 255 | 281 | 40 | 110 | 135 | 65 | 9 | 10 | 15.98 | 50 | 127 | - | 127 | 85 | 116 | 30 | 22 | 18 | 20 | 5 | 5.6 |
| | 60~200 | 22 | 286 | 313 | 65 | 130 | 155 | 90 | 11 | 12 | 17.66 | 60 | 127 | - | 145 | 90 | 116 | 40 | 30 | 22 | 25 | 7 | 7.0 |
| | 250~1800 | 22 | 356 | 382 | 65 | 130 | 155 | 90 | 11 | 12 | 17.66 | 60 | 127 | - | 145 | 90 | 116 | 40 | 30 | 22 | 25 | 7 | 8.9 |
| | 250~1800 | 28 | 393 | 419 | 90 | 140 | 170 | 120 | 11 | 15 | 23.11 | 70 | 127 | - | 170 | 110 | 116 | 45 | 35 | 28 | 31 | 7 | 11.6 |
| 0.2KW 1/4HPx4P | 5~10 | 18 | 290 | 315 | 40 | 110 | 135 | 65 | 9 | 10 | 15.98 | 50 | 127 | - | 127 | 85 | 116 | 30 | 22 | 18 | 20 | 5 | 6.4 |
| | 12.5~25 | 18 | 290 | 315 | 40 | 110 | 135 | 65 | 9 | 10 | 15.98 | 50 | 127 | - | 127 | 85 | 116 | 30 | 22 | 18 | 20 | 5 | 6.4 |
| | 12.5~100 | 22 | 322 | 347 | 65 | 130 | 155 | 90 | 11 | 12 | 17.66 | 60 | 127 | - | 145 | 90 | 116 | 40 | 30 | 22 | 25 | 7 | 7.9 |
| | 120~200 | 28 | 351 | 376 | 90 | 140 | 170 | 120 | 11 | 15 | 23.11 | 70 | 127 | - | 170 | 110 | 116 | 45 | 35 | 28 | 31 | 7 | 10.3 |
| | 250~1800 | 28 | 428 | 453 | 90 | 140 | 170 | 120 | 11 | 15 | 23.11 | 70 | 127 | - | 170 | 110 | 116 | 45 | 35 | 28 | 31 | 7 | 12.4 |
| 0.4KW 1/2HPx4P | 5~10 | 22 | 380 | 440 | 65 | 130 | 155 | 90 | 11 | 12 | 17.66 | 60 | 160 | 195 | 145 | 90 | 131 | 40 | 30 | 22 | 25 | 7 | 12.6 |
| | 12.5~25 | 22 | 380 | 440 | 65 | 130 | 155 | 90 | 11 | 12 | 17.66 | 60 | 160 | 195 | 145 | 90 | 131 | 40 | 30 | 22 | 25 | 7 | 12.6 |
| | 12.5~100 | 28 | 410 | 470 | 90 | 140 | 170 | 120 | 11 | 15 | 23.11 | 70 | 160 | 210 | 170 | 110 | 131 | 45 | 35 | 28 | 31 | 7 | 15.0 |
| | 120~200 | 32 | 450 | 510 | 130 | 170 | 210 | 167 | 13 | 18 | 30.22 | 75 | 160 | 222 | 204 | 130 | 131 | 55 | 45 | 32 | 36.5 | 10 | 27.2 |
| | 250~1800 | 32 | 530 | 590 | 130 | 170 | 210 | 167 | 13 | 18 | 30.22 | 75 | 160 | - | 204 | 130 | 131 | 55 | 45 | 32 | 36.5 | 10 | 29.6 |
| | 250~1800 | 40 | 600 | 660 | 150 | 210 | 260 | 200 | 18 | 23 | 37.96 | 96 | 160 | - | 252 | 160 | 131 | 65 | 55 | 40 | 44 | 10 (12) | 47.2 |
| 0.75KW 1HPx4P | 5~25 | 28 | 420 | 480 | 90 | 140 | 170 | 120 | 11 | 15 | 23.11 | 70 | 192 | 214 | 170 | 110 | 138 | 45 | 35 | 28 | 31 | 7 | 16.7 |
| | 30~100 | 32 | 450 | 510 | 130 | 170 | 210 | 167 | 13 | 18 | 30.22 | 75 | 192 | 227 | 204 | 130 | 138 | 55 | 45 | 32 | 36.5 | 10 | 29.8 |
| | 120~200 | 40 | 510 | 570 | 150 | 210 | 260 | 200 | 18 | 23 | 37.96 | 96 | 192 | - | 252 | 160 | 138 | 65 | 55 | 40 | 44 | 10 (12) | 47.2 |
| | 250~1800 | 40 | 610 | 670 | 150 | 210 | 260 | 200 | 18 | 23 | 37.96 | 96 | 192 | - | 252 | 160 | 138 | 65 | 55 | 40 | 44 | 10 (12) | 49.7 |

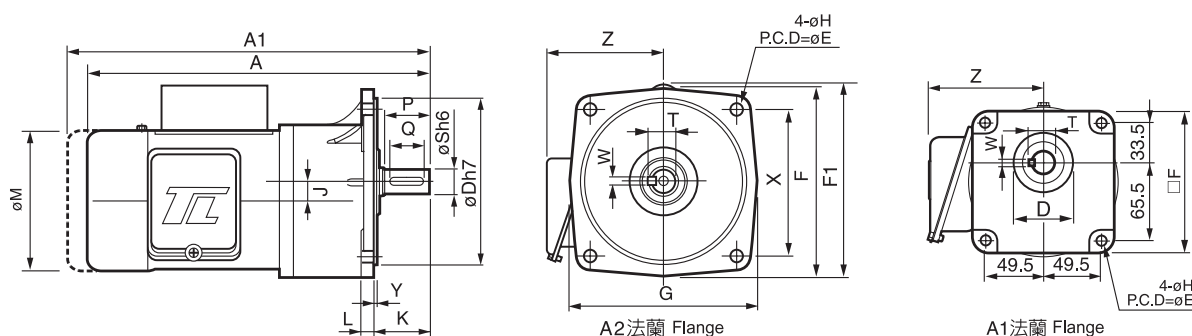
- A1之長度為馬達附剎車之總長。
- 淺藍色為輕扭力之機型。
- 1/8~1 HP之附剎車重量, 約無剎車重量加 2 KG.
- 2~3 HP之附剎車重量, 約無剎車重量加 3.5 KG.
- 40~50 筒齒箱上附加 O 型吊環 (高度約 50 mm).
- 軸徑40mm之鍵寬(w)標準為10mm, 12mm為選用規格。
- Length of A1 is the total length of motor and the brake.
- Colour in Light blue indicates motor of smaller torque.
- Weight of 1/8 ~ 1HP motor w/brake shall be weight of motor w/o brake + 2Kg.
- Weight of a 2~3HP motor w/brake is equal to motor w/o brake + 3.5kg.
- "O" type rings shall be attached to the 40 ~ 50mm gear box. (add. Height: 50mm)
- Keyway (w) for type 40 is 10mm, 12mm is optional.

以上數值若有變動, 恕不另行通知 We reserve the right to change without further notice.



PF型 (立式)單相齒輪減速馬達

PF Type Single-Phase Vertical Gear Reduction Motor (with Flange)



馬達尺寸表 Dimensions

軸徑40mm 之鍵寬(W): 台灣尺寸: 10mm
大陸尺寸: 12mm

| 馬力 HP | 減速比 Gear Ratio | 框號 Type | A | A1 | D | E | X | F | F1 | G | H | L | J | K | M | Y | Z | 出力軸端 Output Shaft | | | | | 重量 App.Wt. Kg | 備註 Remark |
|------------------------|-------------------|------------|-----|-----|-----|-----|-----|-----|-------|-----|------------------------------------|-------|-------|-----|-----|-----|-----|-------------------|----|----|--|--|---------------------|--------------|
| | | | | | | | | | | | | | | | | | | P | Q | S | T | W | | |
| 0.1KW 1/8HPx4P | 5~50 | 18 | 255 | 281 | 50 | 140 | 99 | 122 | - | - | 9 | 12 | 15.98 | 40 | 125 | 5 | 116 | 30 | 22 | 18 | 20 | 5 | 5.5 | A1法蘭 |
| | 60~200 | 22 | 286 | 313 | 148 | 185 | 131 | 168 | - | 165 | 11 | 12 | 17.66 | 50 | 125 | 3.5 | 116 | 40 | 30 | 22 | 25 | 7 | 7.3 | A2法蘭 |
| | 250~1800 | 22 | 356 | 385 | 148 | 185 | 131 | 168 | - | 165 | 11 | 12 | 17.66 | 50 | 125 | 3.5 | 116 | 40 | 30 | 22 | 25 | 7 | 9.2 | A2法蘭 |
| | 250~1800 | 28 | 395 | 420 | 170 | 220 | 156 | 205 | - | 195 | ϕ_{11}^{11} $_{14L}^{14L}$ | 13 | 23.11 | 60 | 125 | 4 | 116 | 45 | 35 | 28 | 31 | 7 | 11.9 | A2法蘭 |
| 0.2KW 1/4HPx4P | 5~10 | 18 | 290 | 315 | 50 | 140 | 99 | 122 | - | - | 9 | 12 | 15.98 | 40 | 125 | 5 | 116 | 30 | 22 | 18 | 20 | 5 | 6.5 | A1法蘭 |
| | 12.5~25 | 18 | 290 | 315 | 50 | 140 | 99 | 122 | - | - | 9 | 12 | 15.98 | 40 | 125 | 5 | 116 | 30 | 22 | 18 | 20 | 5 | 6.5 | A1法蘭 |
| | 12.5~100 | 22 | 322 | 347 | 148 | 185 | 131 | 168 | - | 165 | 11 | 12 | 17.66 | 50 | 125 | 3.5 | 116 | 40 | 30 | 22 | 25 | 7 | 8.3 | A2法蘭 |
| | 120~200 | 28 | 351 | 376 | 170 | 220 | 156 | 205 | - | 195 | ϕ_{11}^{11} $_{14L}^{14L}$ | 13 | 23.11 | 60 | 125 | 4 | 116 | 45 | 35 | 28 | 31 | 7 | 11.7 | A2法蘭 |
| | 250~1800 | 28 | 428 | 453 | 170 | 220 | 156 | 205 | - | 195 | ϕ_{11}^{11} $_{14L}^{14L}$ | 13 | 23.11 | 60 | 125 | 4 | 116 | 45 | 35 | 28 | 31 | 7 | 12.8 | A2法蘭 |
| 0.4KW 1/2HPx4P | 5~10 | 22 | 380 | 440 | 148 | 185 | 131 | 168 | 195 | 165 | 11 | 12 | 17.66 | 50 | 125 | 3.5 | 131 | 40 | 30 | 22 | 25 | 7 | 11 | A2法蘭 |
| | 12.5~25 | 22 | 380 | 440 | 148 | 185 | 131 | 168 | 195 | 165 | 11 | 12 | 17.66 | 50 | 125 | 3.5 | 131 | 40 | 30 | 22 | 25 | 7 | 11 | A2法蘭 |
| | 12.5~100 | 28 | 410 | 470 | 170 | 220 | 156 | 205 | - | 195 | ϕ_{11}^{11} $_{14L}^{14L}$ | 13 | 23.11 | 60 | 125 | 4 | 131 | 45 | 35 | 28 | 31 | 7 | 13.4 | A2法蘭 |
| | 120~200 | 32 | 450 | 510 | 185 | 255 | 180 | 241 | - | 225 | 15 | 15 | 30.22 | 70 | 125 | 4 | 131 | 55 | 45 | 32 | 36.5 | 10 | 24.4 | A2法蘭 |
| | 250~1800 | 32 | 530 | 590 | 185 | 255 | 180 | 241 | - | 225 | 15 | 15 | 30.22 | 70 | 125 | 4 | 131 | 55 | 45 | 32 | 36.5 | 10 | 26.8 | A2法蘭 |
| | 250~1800 | 40 | 600 | 660 | 230 | 310 | 219 | 297 | - | 268 | 15 | 20 | 37.96 | 76 | 125 | 5 | - | 65 | 55 | 40 | 44 | $\begin{matrix} 10 \\ (12) \end{matrix}$ | 47.4 | A2法蘭 |
| 0.75KW 1HPx4P | 5~25 | 28 | 420 | 480 | 170 | 220 | 156 | 205 | 209.5 | 195 | ϕ_{11}^{11} $_{14L}^{14L}$ | 13 | 23.11 | 60 | 158 | 4 | 138 | 45 | 35 | 28 | 31 | 7 | 15.1 | A2法蘭 |
| | 30~100 | 32 | 450 | 510 | 185 | 255 | 180 | 241 | - | 225 | 15 | 15 | 30.22 | 70 | 158 | 4 | 138 | 55 | 45 | 32 | 36.5 | 10 | 26.9 | A2法蘭 |
| | 120~200 | 40 | 510 | 570 | 230 | 310 | 219 | 297 | - | 268 | 15 | 20 | 37.96 | 76 | 158 | 5 | 138 | 65 | 55 | 40 | 44 | $\begin{matrix} 10 \\ (12) \end{matrix}$ | 47.4 | A2法蘭 |
| 250~1800 | 40 | 610 | 670 | 230 | 310 | 219 | 297 | - | 268 | 15 | 20 | 37.96 | 76 | 158 | 5 | 138 | 65 | 55 | 40 | 44 | $\begin{matrix} 10 \\ (12) \end{matrix}$ | 49.7 | A2法蘭 | |

- A1之長度為馬達附剎車之總長。
 - 淺藍色為輕扭力之機型
 - 1/8~1 HP 之附剎車重量, 約無剎車重量加2KG.
 - 2~3 HP 之附剎車重量, 約無剎車重量加 3.5 KG.
 - 軸徑40mm之鍵寬(w)標準為10mm, 12mm為選用規格。
- Length of A1 is the total length of motor and the brake.
 - Colour in Light blue indicates motor of smaller torque.
 - Weight of 1/8 ~ 1HP motor w/brake shall be weight of motor w/o brake + 2Kg.
 - Weight of a 2~3HP motor w/brake is equal to motor w/o brake + 3.5kg.
 - Keyway (w) for type 40 is 10mm, 12mm is optional.

以上數值若有變動, 恕不另行通知 We reserve the right to change without further notice.